



PHUMZILE ENGINEERING SERVICES AND SUPPLIES

COMPANY PROFILE

www.phumzile.co.za



A Caterpillar Brand

Authorized Dealer

TABLE OF CONTENT

- 3. Who We Are
- 4. Company Information
- 5. Ownership
- 6. Business Offering
- 12. Gallery
- 13. Affiliates & Clients
- 16. Contact Information

WHO ARE WE

Phumzile Engineering Services and Supplies is a 100 % black woman owned and managed business based in Polokwane that focuses on General Engineering Services, Earthmoving Equipment and Industrial Supplies. We are an authorized dealer for SEM (A Caterpillar Brand) Equipment.

OUR MISSION

To build a business that will be a force to be reckoned within engineering, plant hire and earthmoving equipment industries.

We achieve this by rendering services and offering products to the industries that utilize heavy machinery and earthmoving equipment, in addition to availing our own equipment for purposes of moving earth. These industries include mining, forestry, construction, agriculture, manufacturing and logistics.

OUR VALUES

- Discipline
- Integrity
- Accountability
- Excellence
- Customer-centric
- Quality-driven



COMPANY INFORMATION

Registered Company Name:	Phumzile Mphelo Services and Supplies (Pty) Ltd
Office Numbers:	015 004 0078 or 015 880 2101
Contact:	Martie Mphelo 082 334 9702
Fax Numbers:	086 274 2563
Email Address:	martie@phumzile.co.za
Company Registration Number:	2006/039231/07
CSD Registration Number:	MAAA0049969
COID Registration Number:	2777-358-2200
Income Tax Reference Number:	9524876159
Vat Reference Number:	4570267866
Business Address:	47 Lood Street, Futura, Ladanna, Polokwane
Postal Address:	P O Box 12081, Bendor Park, 0713
Director and Shareholder:	Martie Phumzile Mphelo (100%)
Bankers:	Standard Bank , FNB, Nedbank

OWNERSHIP AND MANAGEMENT OF THE BUSINESS

The sole shareholder and director of the company is Martie Phumzile Mphelo. As such the company is 100% black woman managed and owned.

Martie holds an MBA from University of Limpopo and an MSc from the University of the Western Cape. She worked as a Research Scientist at the Agricultural Research Council (ARC) for two years, and then moved on to work as Software Quality Assurance Tester for Electric Genetics for two years. Upon leaving Electric Genetics, she joined Pfizer Consumer Healthcare Research and Development division as a Development Analytical Chemist for three years, where she was responsible for Environmental Health and Safety aspects of the laboratory. She was also involved in training junior employees on various laboratory related instrumentation, policies and procedures. After leaving Pfizer, Martie started developing SAQA-based learning material for Anglo Platinum, and for Top Performers for Africa.

The learning material for developed for Anglo Platinum, is used at to train employees in their laboratories across the country. In addition to learning material, she facilitated training for Anglo Platinum representing Top Performers for Africa.

Martie is assisted by Carstens Mphelo in the management of the business. Carstens holds B. Proc from University of Limpopo, LL B from Wits University and MBA from University of Cape Town. He is an attorney and notary public and practiced for many years with Webber Wetzel Bowens Attorneys in Johannesburg, and also with Milbank Tweed Hadley and McCloy of New York, USA. Upon leaving legal practice, he joined Consani Engineering as a Commercial Manager where he gained experience in strategy formulation, project management and implementation and manufacturing in mechanical engineering industry.

At Consani Carstens was head of Human Resources Department, responsible for up to 1400 employees in unionised environment in an engineering manufacturing environment. Carstens served in senior positions within large corporates, and was until recently executive director and Chief Operating Officer of Metropolitan Asset Managers Limited, and investment management company that had R55 billion of assets under management at the time of his departure.

OUR BUSINESS OFFERING

Our business is divided into four mutually complimentary division, namely:



SEM (A Caterpillar Brand)
Dealership in Limpopo



General Engineering



Industrial Supplies



Plant Hire



Mechanical

These divisions compliment one another in that they either share customers or are part of the same value chain.



GENERAL ENGINEERING DIVISION

The general engineering operation entails:

- Tooling
- Manufacture of new spares (shafts, bushes etc.)
- Profile cutting
- Sheet metalwork
- Line boring
- Manufacture, repair and maintenance of gantries, overhead cranes and loading bases
- Repair and refurbishment of grader moldboards, excavator and TLB buckets
- Repair and refurbishment of slashers, slasher gearboxes, walk-behind roller, and generators.
- Plant repair and maintenance (plant shut down)
- Boiler making
- Hydraulics
- Thread cutting
- Conveyor belt repair and maintenance

Our clientele for general engineering includes saw mills, brick manufacturing companies, mines, construction companies, farmers, local and provincial government departments and smelters and automotive and beverage industry.



GENERAL ENGINEERING DIVISION



**Chimney Fabricated
for SAFCOL
Timbadola Plant**



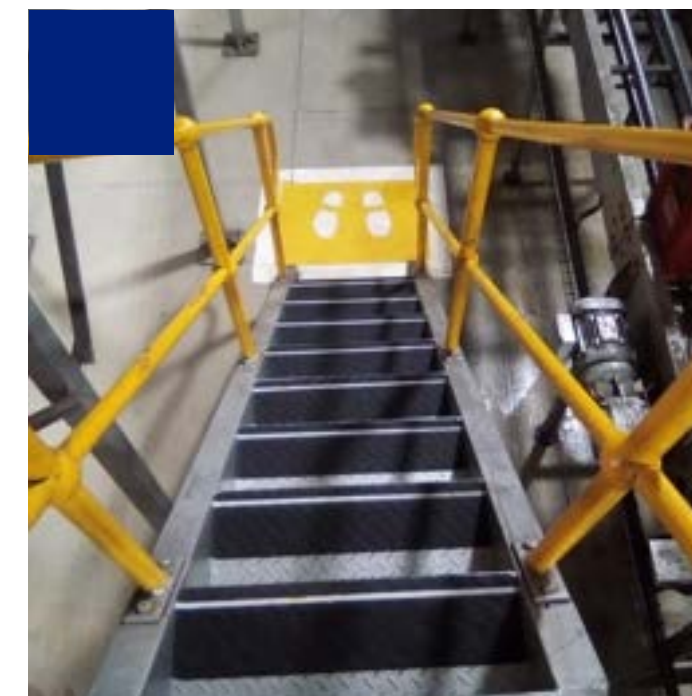
**Engineering jobs
completed**



**Skip bin repairs for
ABInBev (SAB)
Polokwane Plant**



**Slasher repairs for
Polokwane
Municipality**



**Staircase fabrication
at CCBSA Polokwane
Plant**



MECHANICAL DIVISION

Our Mechanical division focuses on repair, maintenance and servicing of earthmoving equipment and commercial vehicles. The repairs can be done at our workshop in Polokwane or on site, depending on customer preference, the nature of work to be done, and the type of equipment. Our capability includes normal service according to original equipment manufacturers' schedule, engine and transmission rebuilds, full refurbishment, repair and refurbishment of ground engaging tools and implements, and hydraulics.

Our major customers for earthmoving equipment include:

- Provincial Government Departments
- Local Municipalities • Fleet Operators
- Construction companies
- Plant Hire companies

Our mechanical repairs division forms part of the registered merchants for ABSA Fleet Management Solutions, Standard Bank Fleet and Wesbank.

EXPERIENCE

We recently refurbished CAT 140H, CAT 140G, CAT 120G and XCMG graders for Limpopo Department of Public Works, Roads and Infrastructure.



EARTHMOVING EQUIPMENT DIVISION

We are an authorized dealer for SEM Equipment (A Caterpillar Brand).

We supply earthmoving equipment to customers, either for ownership or short-term use. We offer earthmoving equipment for long-term or short-term hiring purposes. Our target market includes:

- Municipalities
- Provincial government departments
- Farmers
- Construction companies

Over the past few years, we have supplied various equipment to multiple municipalities, provincial departments and private companies all over South Africa.



PLANT HIRE DIVISION

We supply earthmoving equipment to customers, either for ownership or short term use. We offer earthmoving equipment for long-term or short-term hiring purposes.

Our Main Clients:

- Government Departments
- Construction Companies
- Municipalities
- Farmers



INDUSTRIAL SUPPLIES DIVISION

The industrial supply business offers spares, consumables, tools and materials used in the industries that we serve. Our core supplies are:

- Filters – wide range of filtration technology
- Spares and parts for earth moving equipment, trucks and other commercial vehicles
- Friction spares – wet and dry brake systems
- Industrial consumables (rags, hand cleaners, detergents)
- Earth engaging tools (e.g. grader blades, bucket teeth)
- Lubricants and related chemicals (degreasers, anti-freeze/coolants, disinfectants, etc.)
- Abrasives
- Bolts and Nuts

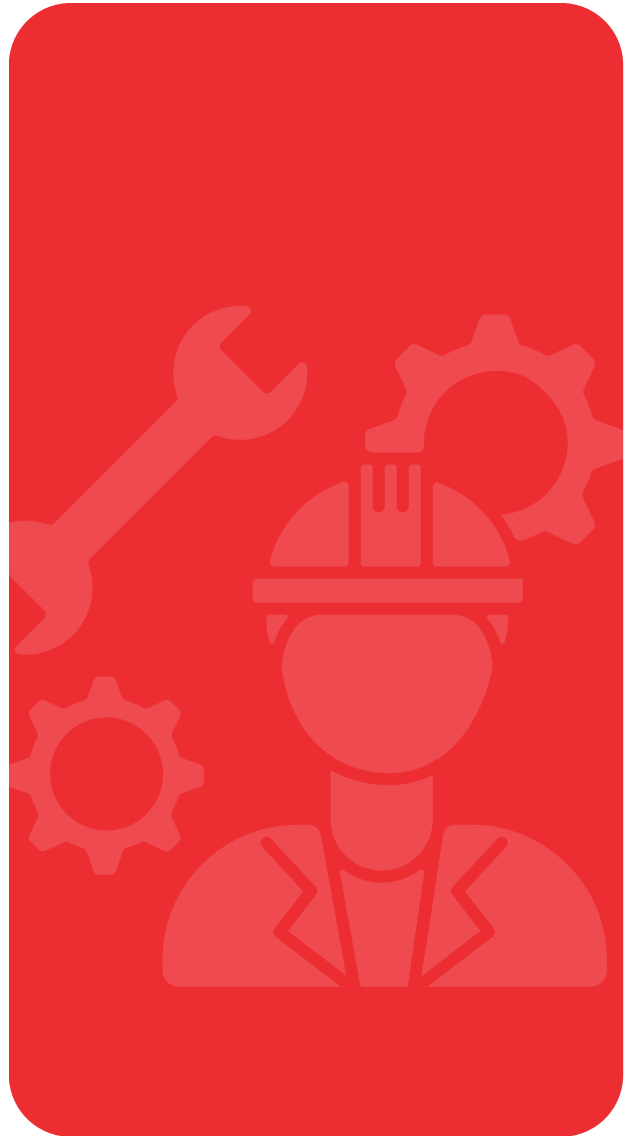
Our main target clients include: government, private sector & SMMEs.





GALLERY

WE KEEP EARTHMOVING EQUIPMENT MOVING





AFFILIATES & CLIENTS

OUR AFFILIATIONS

Barloworld SEM (A Caterpillar Brand) Dealer
WesBank Fleet Management and Leasing
ABSA Vehicle Management Solutions
Minatlou-Future Fleet Solutions

ACCREDITATIONS

RMI certified

CUSTOMERS

Limpopo Department of Public Works, Roads and Infrastructure
Limpopo Department of Transport
Limpopo Department of Health
Limpopo Department of Social Development
Department of Justice
Department of Water and Sanitation
Limpopo Department of Correctional Services
SAFCOL
Coca Cola Beverages South Africa

Polokwane Local Municipality
Free State Department of Public Works
Nkomazi Local Municipality
Lepelle-Nkumpi Local Municipality
Ntabankulu Local Municipality
Midvaal Local Municipality
SAKKOR Manufacturing
Barloworld Equipment
Maruma Plant Hire





A Caterpillar Brand
Authorized Dealer



CONTACT US

-  015 880 2101 | 015 004 0078
-  082 334 9702 (Emergencies)
-  www.phumzile.co.za
-  info@phumzile.co.za
-  47 Lood Street, Ladanna, Futura, Polokwane